

INFORME DE ENSAYO CANNABINOIDES – CANNABINOIDS TEST REPORT

N.º DE REGISTRO – REGISTRY NUMBER

M18-0606

Datos del Solicitante – Applicant details

ACE Seeds.

Datos de la muestra – Sample data

Nombre de la muestra – <i>Sample name:</i>	Zamaldelica x Kali China
Fecha recepción – <i>Reception date:</i>	22/03/2018
Tipo de muestra – <i>Sample Type:</i>	Vegetable
Toma de muestra – <i>Sampling:</i>	By customer
Fecha de inicio – <i>Start date:</i>	23/03/2018
Fecha fin – <i>Finish date:</i>	05/04/2018

Parámetro	Resultado % (p/p)	mg/g	Método
<i>Parameter</i>	<i>Result % (w/w)</i>	<i>mg/g</i>	<i>Method</i>
CBDA	0.063	0.63	PI-FC-10C17.01 (HPLC-UV)
CBGA	1.998	19.98	PI-FC-10C17.01 (HPLC-UV)
CBG	0.195	1.95	PI-FC-10C17.01 (HPLC-UV)
CBD	<0.033	<0.33	PI-FC-10C17.01 (HPLC-UV)
THCV	<0.033	<0.33	PI-FC-10C17.01 (HPLC-UV)
CBN	<0.033	<0.33	PI-FC-10C17.01 (HPLC-UV)
THC	1.632	16.32	PI-FC-10C17.01 (HPLC-UV)
THCA	20.085	200.85	PI-FC-10C17.01 (HPLC-UV)
CBC	<0.033	<0.33	PI-FC-10C17.01 (HPLC-UV)

Client name: ACE Seeds.

Type of sample: vegetable

Date of delivery: 22-03-2018

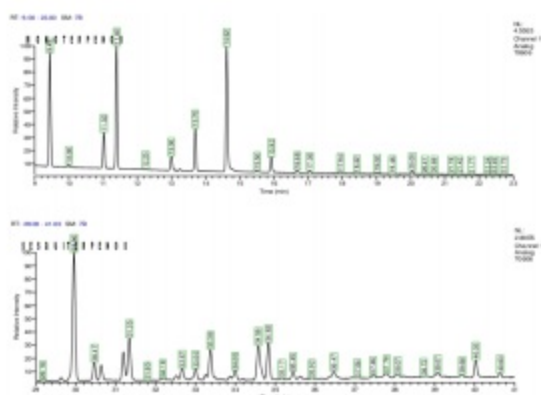
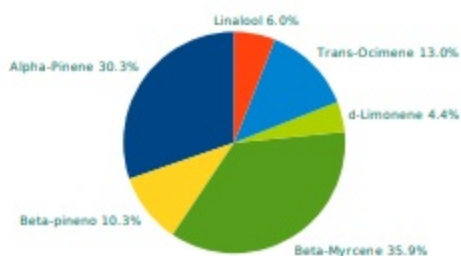
Humidity:
Sample: Zamaldelica x Kali China

Comments:
Date of analysis: 17-04-2018

N.I laboratory: M18-T0606

MONOTERPENES

Alpha-Pinene	0.212%
Camphene	N.D.
(-)-beta-Pinene	0.072%
Beta-Myrcene	0.251%
delta-3-Carene	N.D.
Alpha-Terpinene	N.D.
p-Cymene	N.D.
d-Limonene	0.031%
Eucaliptol	--
Cis-Ocimene	N.D.
Gamma-Terpinene	N.D.
Trans-Ocimene	0.091%
Terpinolene	N.D.
Linalool	0.042%
(-)-Isopulegol	N.D.
Geraniol	N.D.

CHROMATOGRAM

MONOTERPENES RELATIVE RATIO

SESQUITERPENES

Beta-caryophyllene	0.218%
Alpha-humulene	0.078%
Cis-Nerolidol	N.D.
Trans-nerolidol	N.D.
Caryophyllene oxide	0.021%
(-)-Guaialol	N.D.
(-)-alpha-Bisabolol	0.036%

SESQUITERPENES RELATIVE RATIO
