

**Muestra ID:**

1

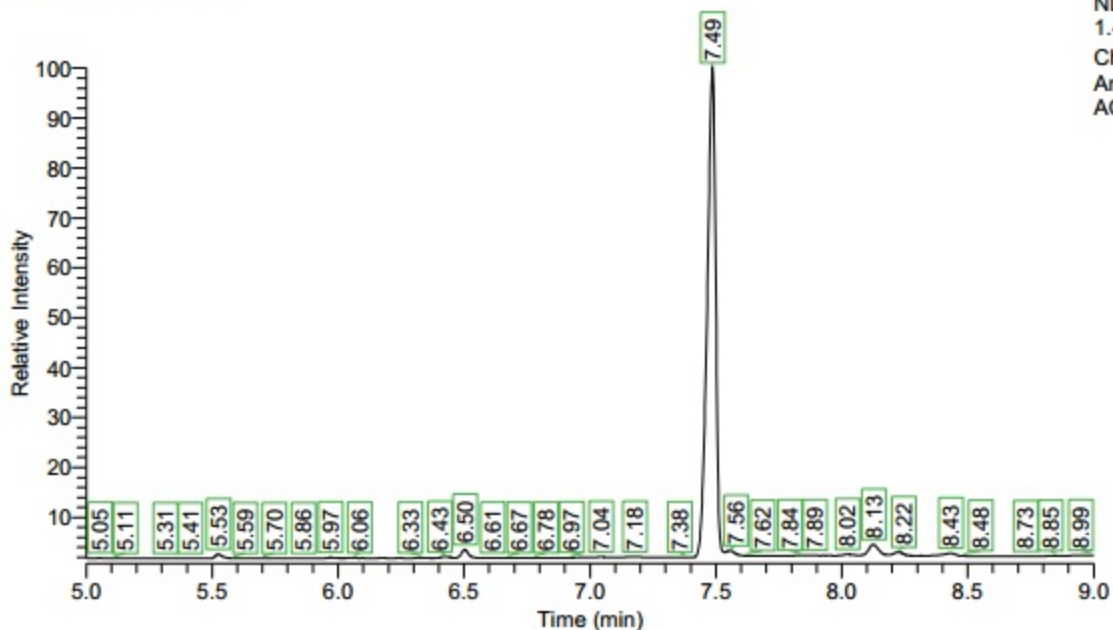
**Nombre del archivo:**

ACE\_01

**Fecha análisis:**

05/13/13 02:36:46 PM

RT: 5.00 - 9.00 SM: 7B



NL:  
1.44E6  
Channel 1  
Analog  
ACE\_01

TR	Nombre del componente	Cantidad calculada (%)
3.02	IS	N/A
6.43	CBD	0.03
6.50	CBC	0.16
7.49	THC	15.66
8.12	CBG	0.47
8.23	CBN	0.10

Neiko's Nuggs

Flower

Zamaldelica

GC/FID

CLIENT

SAMPLE TYPE

STRAIN

METHOD USED

4/11/16

4/12/16

1 gram

*L. A. M.*

DATE RECEIVED

DATE TESTED

SIZE OF SAMPLE

ANALYST SIGNATURE

## Cannabinoid Profile

Major Cannabinoids	Concentration (% dry wt.)	Error
$\Delta^9$ -THC	19.5	± 1.9
CBD	0.37	± 0.04
CBN	0.22	± 0.02
Minor Cannabinoids	Concentration (% dry wt.)	Error
CBG	2.03	± 0.20
CBC	0.39	± 0.04
THCV	0.15	± 0.01
Total Cannabinoids:	22.6 %	
Moisture Content:	12 %	

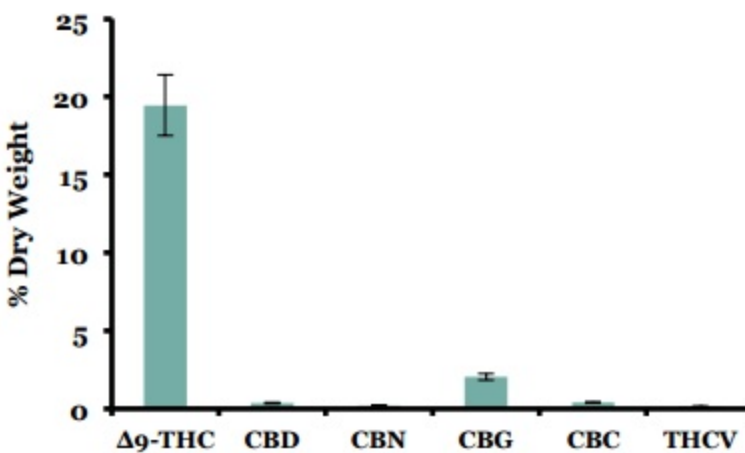
## Macro



## Micro



## Cannabinoid Profile Plot



## Purity

Foreign Material	Present Y/N	Detection Method
Mold, Mildew, Fungus	N	Microscopy
Foreign Material	N	Microscopy
Pests	N	Microscopy

## Analyst Notes

## Footnotes

## Share!

Feel free to share your report on Twitter,

Facebook, Instagram, etc. **#PSILabs**



Neiko's Nuggs  
CLIENT

Flower  
SAMPLE TYPE

Zamaldelica  
STRAIN

GC/MS  
METHOD USED

4/11/16  
DATE RECEIVED

4/14/16  
DATE TESTED

1 gram  
SIZE OF SAMPLE

*L. L. M.*  
ANALYST SIGNATURE

## Terpenoid Profile

Terpenes	Concentration (% by wt.)	Terpenes	Concentration (% by wt.)
Alpha-Pinene	0.05	Terpinolene	0.23
Camphene		Linalool	0.03
Beta-Myrcene	0.22	Isopulegol	
Beta-Pinene	0.08	Geraniol	
3-Carene	0.02	Caryophyllene	0.10
Alpha-Terpinene	0.01	Humulene	0.03
Ocimene		Nerolidol 1	
D-Limonene	0.06	Nerolidol 2	0.01
P-Cymene		Guaiol	
Beta-Ocimene	0.10	Caryophyllene Oxide	
Eucalyptol		Alpha-Bisabolol	
Gamma-Terpinene	0.01	<b>Total Terpenes</b>	<b>0.95</b>

## Terpenoid Profile Plot

Share

Feel free to share your report on Twitter, Facebook, Instagram, etc. **#PSILabs**

