

INFORME DE ENSAYO CANNABINOIDES – CANNABINOIDS TEST REPORT

N.º DE REGISTRO – *REGISTRY NUMBER*

M17-2089

Datos del Solicitante – *Applicant details*

ACE Seeds.

Datos de la muestra – *Sample data*

Nombre de la muestra – <i>Sample name:</i>	ErdPurt 1
Fecha recepción – <i>Reception date:</i>	23/11/2017
Tipo de muestra – <i>Sample Type:</i>	Vegetable
Toma de muestra – <i>Sampling:</i>	By customer
Fecha de inicio – <i>Start date:</i>	23/11/2017
Fecha fin – <i>Finish date:</i>	04/12/2017

Parámetro	Resultado % (p/p)	mg/g	Método
<i>Parameter</i>	<i>Result % (w/w)</i>	<i>mg/g</i>	<i>Method</i>
CBDA	6.617	66.17	PI-FC-10C17.01 (HPLC-UV)
CBGA	0.044	0.44	PI-FC-10C17.01 (HPLC-UV)
CBG	0.043	0.43	PI-FC-10C17.01 (HPLC-UV)
CBD	0.351	3.51	PI-FC-10C17.01 (HPLC-UV)
THCV	<0.033	<0.33	PI-FC-10C17.01 (HPLC-UV)
CBN	<0.033	<0.33	PI-FC-10C17.01 (HPLC-UV)
THC	1.060	10.6	PI-FC-10C17.01 (HPLC-UV)
THCA	5.495	54.95	PI-FC-10C17.01 (HPLC-UV)
CBC	0.165	1.65	PI-FC-10C17.01 (HPLC-UV)

Client name: ACE Seeds.

Type of sample: vegetable

Date of delivery: 23-11-2017

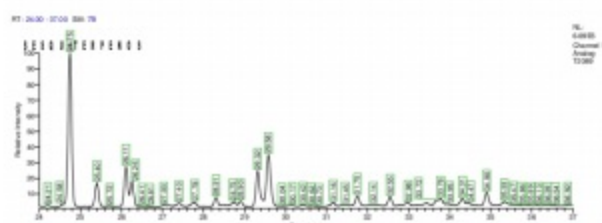
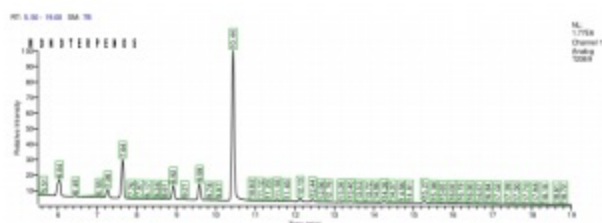
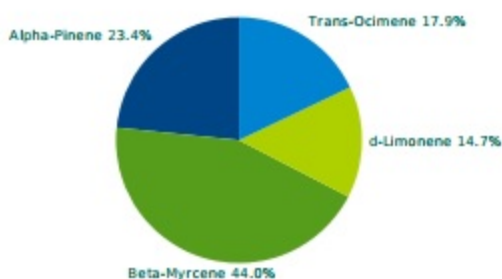
Humidity:
Sample: ErdPurt 1

Comments:
Date of analysis: 26-12-2017

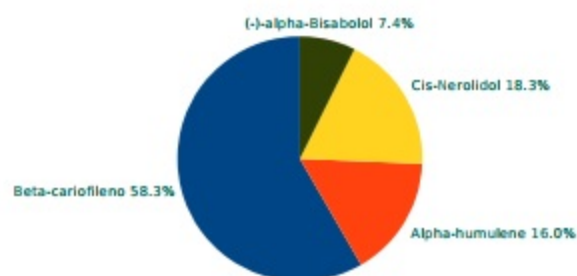
N.I laboratory: M17-T2089

MONOTERPENES

Alpha-Pinene	0.043%
Camphene	N.D.
(-)-beta-Pinene	N.D.
Beta-Myrcene	0.081%
delta-3-Carene	N.D.
Alpha-Terpinene	N.D.
p-Cymene	N.D.
d-Limonene	0.027%
Eucaliptol	--
Cis-Ocimene	N.D.
Gamma-Terpinene	N.D.
Trans-Ocimene	0.033%
Terpinolene	N.D.
Linalool	N.D.
(-)-Isopulegol	N.D.
Geraniol	N.D.

CHROMATOGRAM

MONOTERPENES RELATIVE RATIO

SESQUITERPENES

Beta-caryophyllene	0.182%
Alpha-humulene	0.050%
Cis-Nerolidol	0.057%
Trans-nerolidol	N.D.
Caryophyllene oxide	N.D.
(-)-Guaïol	N.D.
(-)-alpha-Bisabolol	0.023%

SESQUITERPENES RELATIVE RATIO


N.D. = <0.02%