

INFORME DE ENSAYO CANNABINOIDES – CANNABINOIDS TEST REPORT

N.º DE REGISTRO – REGISTRY NUMBER

M18-0610

Datos del Solicitante – Applicant details

ACE Seeds.

Datos de la muestra – Sample data

Nombre de la muestra – <i>Sample name:</i>	Bangi Haze x Etiope 3
Fecha recepción – <i>Reception date:</i>	22/03/2018
Tipo de muestra – <i>Sample Type:</i>	Vegetable
Toma de muestra – <i>Sampling:</i>	By customer
Fecha de inicio – <i>Start date:</i>	23/03/2018
Fecha fin – <i>Finish date:</i>	06/04/2018

Parámetro	Resultado % (p/p)	mg/g	Método
<i>Parameter</i>	<i>Result % (w/w)</i>	<i>mg/g</i>	<i>Method</i>
CBDA	0.080	0.8	PI-FC-10C17.01 (HPLC-UV)
CBGA	1.463	14.63	PI-FC-10C17.01 (HPLC-UV)
CBG	0.065	0.65	PI-FC-10C17.01 (HPLC-UV)
CBD	<0.033	<0.33	PI-FC-10C17.01 (HPLC-UV)
THCV	0.294	2.94	PI-FC-10C17.01 (HPLC-UV)
CBN	<0.033	<0.33	PI-FC-10C17.01 (HPLC-UV)
THC	1.149	11.49	PI-FC-10C17.01 (HPLC-UV)
THCA	14.078	140.78	PI-FC-10C17.01 (HPLC-UV)
CBC	<0.033	<0.33	PI-FC-10C17.01 (HPLC-UV)

Client name: ACE Seeds.

Type of sample: vegetable

Date of delivery: 22-03-2018

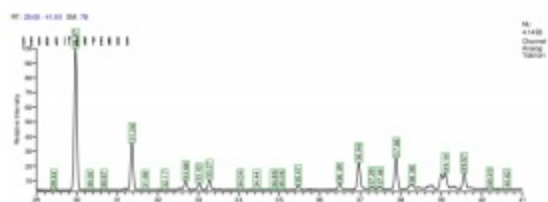
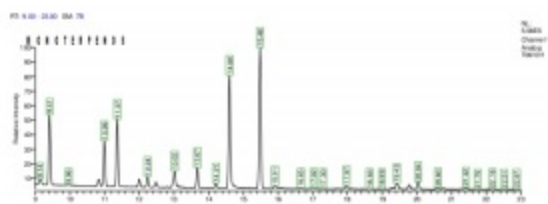
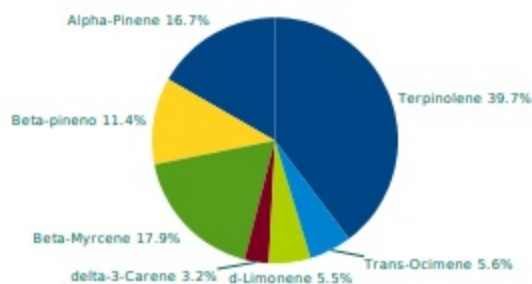
Humidity:
Sample: Bangi Haze x Etiope 3

Comments:
Date of analysis: 24-04-2018

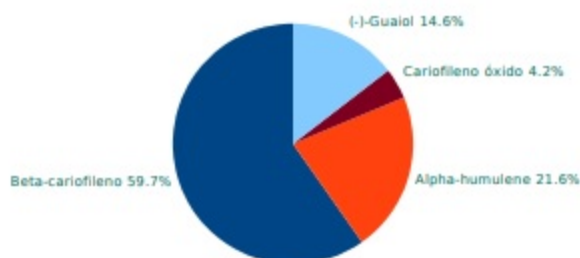
N.I laboratory: M18-T0610r1

MONOTERPENES

Alpha-Pinene	0.143%
Camphene	N.D.
(-)-beta-Pinene	0.098%
Beta-Myrcene	0.153%
delta-3-Carene	0.027%
Alpha-Terpinene	N.D.
p-Cymene	N.D.
d-Limonene	0.047%
Eucaliptol	--
Cis-Ocimene	N.D.
Gamma-Terpinene	N.D.
Trans-Ocimene	0.048%
Terpinolene	0.340%
Linalool	N.D.
(-)-Isopulegol	N.D.
Geraniol	N.D.

CHROMATOGRAM

MONOTERPENES RELATIVE RATIO

SESQUITERPENES

Beta-caryophyllene	0.316%
Alpha-humulene	0.114%
Cis-Nerolidol	N.D.
Trans-nerolidol	N.D.
Caryophyllene oxide	0.022%
(-)-Guaial	0.077%
(-)-alpha-Bisabolol	N.D.

SESQUITERPENES RELATIVE RATIO


Client name: ACE Seeds.

Type of sample: vegetable

Date of delivery: 22-03-2018

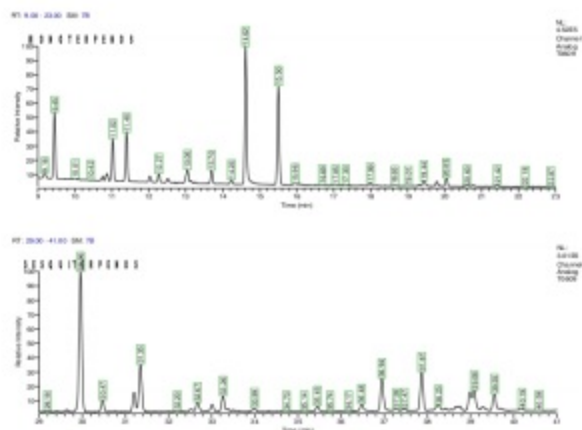
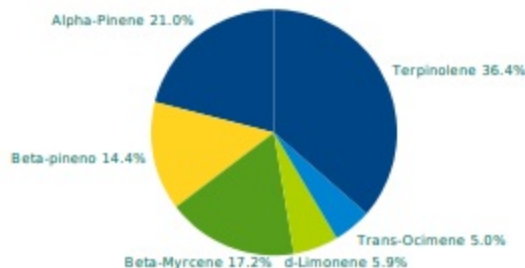
Humidity:
Sample: Bangi Haze x Etiope 1

Comments:
Date of analysis: 19-04-2018

N.I laboratory: M18-T0609

MONOTERPENES

Alpha-Pinene	0.117%
Camphene	N.D.
(-)-beta-Pinene	0.080%
Beta-Myrcene	0.096%
delta-3-Carene	N.D.
Alpha-Terpinene	N.D.
p-Cymene	N.D.
d-Limonene	0.033%
Eucaliptol	--
Cis-Ocimene	N.D.
Gamma-Terpinene	N.D.
Trans-Ocimene	0.028%
Terpinolene	0.203%
Linalool	N.D.
(-)-Isopulegol	N.D.
Geraniol	N.D.

CHROMATOGRAM

MONOTERPENES RELATIVE RATIO

SESQUITERPENES

Beta-caryophyllene	0.240%
Alpha-humulene	0.088%
Cis-Nerolidol	N.D.
Trans-nerolidol	N.D.
Caryophyllene oxide	N.D.
(-)-Gualol	0.071%
(-)-alpha-Bisabolol	N.D.

SESQUITERPENES RELATIVE RATIO
